

User Manual



Thank you very much for buying a awning. We and countless satisfied customers worldwide believe that you have exercised excellent judgment in your selection. Our products have been designed to give you many years of comfort and reliability during your adventures. The greenline team tries t he outmost to meet the highest expectations by designing and crafting highly functional, flexible and durable products that withstand and support your active lifestyle. Successful operation and long product life depends on proper maintenance and correct operating techniques. We recommend that you carefully read this entire manual before installing and operating the awing or accessories. Keep this manual handy for future reference.

Index of contents:

Delivery content	Page 3
Awning installation	Page 3
Awning operation	Page 8
Gumtree mesh room	Page 11
Gumtree tent room	Page 12
Storage and handling guidelines	Page 13
Important and helpful hints	Page 14
Warranty and contact details	Page 17

Delivery content

Before you start to fix your awning to your car take a minute and organise all parts provided.

Included in delivery:

Pre-assembled awning

2 x L-shaped mounting brackets

6-8 x M6 bolts and nuts (depending on awning model)

2 x Ropes and Pegs

Awning installation

Your awning comes pre-assembled but needs some easy to handle final steps before it is ready to be mounted to your car.

Step by Step mounting:

Hint:

There are basically four ways how to fix the mounting brackets to your car.

With the use of a Roof Tent you simply slide them into the existing tent rails.

Alternatively, you need to fix the brackets directly to your roof rack by either drilling holes, make use of your racks mounting tracks or fix them directly to your basket without any L-brackets.

The position of the mounting brackets has an effect on the height of your awning:

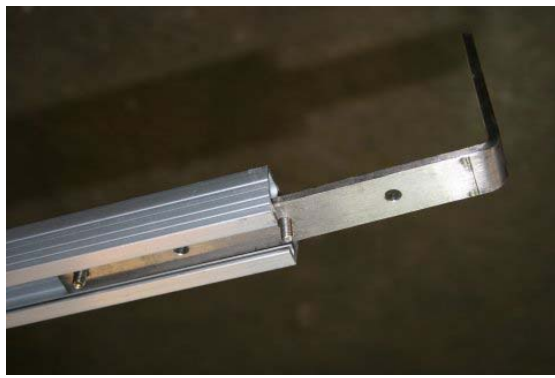


You can adjust the height by installing the brackets facing up or downwards.

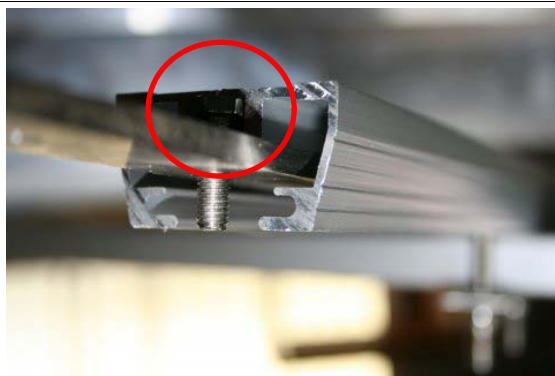


Please make sure downwards facing brackets are not in the way of your side doors.

Fix awning mounting brackets to roof tent rails:



Use the groove of the roof tent mounting rail to slide in the mounting brackets with the M6 bolts in place.



The head of the bolt will be held in place from the roof tent mounting rail.







Slide them to the desired position and fix the bracket with fitting nuts to the mounting rails.





We recommend to use roof tent mounting rails to fix our 1.4m awning to the rear of your car.


Fix awning mounting brackets to roof racks without mounting tracks:

	<p>Place the L-brackets on top of your rack.</p>
	<p>Make sure all L-brackets are aligned and have the desired distance to your car before you mark the drilling holes on your rack.</p>
	<p>Drill at least 2 holes for each bracket. We highly recommend to take the racks off your car for this procedure.</p>
	<p>Fix the brackets to your rack by using M6 bolts at the necessary length and tensile strength.</p>

Fix awning mounting brackets to roof racks with mounting tracks:

	<p>Many roof racks have a mounting track system that allows to use sliding bolts to fix the L-brackets.</p>
	<p>Make sure the sliding bolts have the necessary size (M6) to fit the mounting brackets. Position the brackets on top of the rack and fix them with washer, split ring and nut.</p>

Fix awning directly to a roof basket:

	<p>You can fix the awning on a vertical surface by simply drilling 4 holes with the desired distance and use the sliding bolts to fix the awning directly to your car/basket. Check the integrity of the surface you plan to mount the awning to first.</p>
---	---

IMPORTANT:

We recommend that the awning has on neither side no more than 50cm overhang to avoid any kind of wobble during driving. It may be necessary to use 3 mounting brackets for long awnings and/or heavy off-road use. Prepare and choose your roof rack accordingly.

Fix the awning to the mounting brackets:



Now that the brackets are in place, you need to put the remaining 4 M6 bolts into the groove of the backside of the awning.



Space the bolts to the distance of your mounting brackets on the car.



Make sure the awning is the right way around. Use two persons to lift it in place and fix the bolts at the back of the mounting plate to the mounting brackets.



Fix the awning to the mounting brackets with M6 bolts.

IMPORTANT:

Tighten all the nuts and make sure your Awning is securely fixed.

It is mandatory to check the awning before, during and after each trip that it is securely mounted.

Awning operation

Our awnings are designed to provide reliable shelter in an instant, be it for a quick roadside rest or to pitch camp at a remote location for the long term.

IMPORTANT:

All our products are manufactured to the highest standards and precision. They do not require any form of force during the process of opening or closing of your awning. In case you face a problem, please check for obstacles, fouling, foreign objects or too much tension first.

Step by step instruction how to open your awning:



Choose a beautiful spot to park your car. Make sure the surface is flat and not in the risk of falling branches or flooding. Secure your car by keeping it in first gear or parking AND put on the hand brake.



Avoid unsafe places.



Open the travel cover and release the straps.

Hint:

We recommend two persons to open and close the awning.

One person should hold the awning in place whilst the other one is installing the frame work.



Unroll the awning completely and hold it in place.



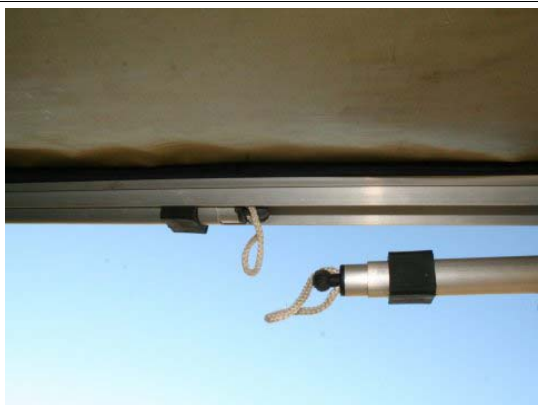
All poles are hinged and telescopic.

They lock and unlock with a slight twist.

Unfold the horizontal poles.



Feed them into the designated opening on the outer frame and extend them to tension the awning material.



Unfold the vertical poles and put them on the ground.



Lock them at the desired height with a slight twist movement.



Fix the awning material to the frame with the Velcro fasteners.



Use ropes and pegs to fix the awning securely to the ground.



During rain and unsupervised periods, always lower one leg to allow rainwater to run off the awning and avoid pooling.

Mesh Room



Feed the outer zip flap into the sail track of the awning. This part needs to be fixed for the very first assembly only and can remain on the awning.



Slide the mosquito net into the sail track at the bottom of the awning mounting plate.



Zip the other side of the awning to the zip flap you installed at the very beginning.



Fix the mosquito net to the side poles of the awning with the clip connectors.



Peg the mosquito net to the ground.

Tent Room



Feed the outer zip flap into the sail track of the awning. This part needs to be fixed for the very first assembly only and can remain on the awning.



Slide the tent walls into the sail track at the bottom of the awning mounting plate.



Zip the other side of the awning to the zip flab you installed at the very beginning.



Fix the mesh room to the side poles of the awning with the clip connectors.



Peg the floor securely to the ground.

Storage and handling guidelines

What to do with my awning / tent in between trips?

If you are not using your awning / tent for a long period, it is advised to remove it from the vehicle. Always ensure that the awning / tent is completely dry if it is stored for longer periods.

Do not store the awning / tent wet. As soon as you can, within a few days, open the awning / tent and let it dry out thoroughly to prevent moisture damage.

Can I pack the awning / tent together when it is wet?

You can pack the awning / tent together when wet and reopen it several hours later. If you do so, make sure it dries completely when reopened. We advise that you should always ensure that the awning / tent is dry if it is packed up for longer periods of time to prevent mould. Although our material is mould resistant, it still might develop mould if stored wet for extended periods.

Do I need to reseal the canvas?

This will very much depend on how much you use the product. We have customers that have travelled for months on end, using the awning / tent every day and they still find that it is as waterproof as on the day they bought it. However, it is a good idea to reseal if it is in frequent use. Only utilise quality protective agent from your local camping/outdoor shop or run a block of beeswax around the seams to revitalise the seam protection.

How should I take care of my Gordigear awning / tent?

Clean with cold water only. A brush can be used if required. Do not use chemicals, soap or detergents. Using a silicon spray on all zips from time to time will extend their life. It is recommended to thoroughly wet the canvas and allow to dry before first usage. Repeat up to three times to ensure sealing of the material.

Mildew:

To avoid mildew, never put your awning / tent away wet or damp. However, if mildew occurs, use a soft bristle brush or sponge to clean. Let the tent dry in the sunlight and re apply seam sealer compound on the inside of the seams.

Repairing a tear:

For small tears, use a self adhesive patch kit. We recommend a canvas or awning repairer for larger tears.

Removing pegs

Pegs should be pulled with another peg, hammer or a peg puller, never by pulling on the tent. Avoid pegging your tent so tight that it stresses the fabric. Overstretching may cause peg loops and fabric to tear.

Floor condensation

A ground sheet underneath the tent prevents the floor from feeling damp and helps prolong its life. The ground sheet should be smaller than the tent's floor to prevent rain from running under the tent.

Fading fabric:

Do not leave your tent set up in direct sunlight for prolonged periods of time as this weakens and fades the fabric.

Faulty zipper

All our tents are manufactured with highest quality zips. However, dust and sand are the main reasons for zip tear and wear. If the zipper separates, you can fix the zipper by moving the slider to the beginning of the zipper tape and reworking the zipper. If separation continuous undo the zip, give the slider a slight squeeze with pliers and rework the zipper.

Important and helpful hints

Speed Limit.

To avoid damage to your awning / tent or car and considering general safety, we do not recommended to exceed a speed limit of 100km/h.

Pre Trip Inspection:

Before, during and after each trip, please check that the awning / tent is securely mounted to your roof rack, as well as the roof racks to your car.

Centre of gravity.

The attachment of a awning / tent to your vehicle (similar to any other load on your roof rack) will alter its centre of gravity. Adjust your driving accordingly, especially off-road and on deep surfaces like sand or snow.

Overall height.

Be aware that with an awning / tent fitted to your vehicle the overall height could be increased. You should measure the overall height of your vehicle with the roof tent fitted as you will need this information to decide if the vehicle can enter car parks etc.

How to set the awning / tent up in different environmental conditions?

In windy conditions it is advised to find a location with less exposure. Always use your car to shield the awning / tent and peg it securely to the ground. Also, don't forget to be mindful of trees in such conditions. Just in case a branch falls.

During rain, make sure you lower one leg of the awning to assist water drainage. Otherwise water will pool within the awning and damage the frame.

Camp Safe – Safety Habits

The fabric may burn if left in continuous contact with a flame from any source. Also, the application of any foreign substance to the tent fabric may render the flame resistant properties ineffective.

To prevent injury caused by gas poisoning or suffocation

- Do not use fuel burning, oxygen consuming devices inside. This includes candles, gas lanterns, kerosene lamps, stoves, cooking and heating appliances
- Do not use gas appliances of any kind inside.

To prevent injury caused by fire

- Do not pitch the awning / tent near a camp fire or any other flame source
- Do not use candles, matches or any other flame source in or near the awning / tent (this includes stoves, cooking equipment, lighting and heating appliances)
- Only use recommended water repellent compounds
- Do not spray tent fabrics with insecticides

To prevent injury caused by electricity

- Always exercise care when using electricity and electric lighting in and near awning / tent. Only use 12 volt lighting.

To prevent injury caused by your camping environment

- Do not pitch your awning / tent on an area that could get flooded
- Do not leave your awning / tent erected in strong winds – collapse it and seek refuge in your vehicle
- Do not pitch your awning / tent near cliffs in case of collapse or rock fall
- Do not pitch your awning / tent under trees with dead branches or under trees known to drop branches
- Do not pitch your awning / tent near rivers, lakes or the sea known to inhabitant crocodiles

Understanding your tent and awning.

- This product is designed as a temporary structure; it is not designed to be a permanent structure or dwelling
- Intermittent use only. Although our fabrics are treated for extra UV resistance, continuous exposure to sun light will break the fabric down. Fading of colour is an early warning sign. These tents and awnings are not designed as permanent dwellings or structures.
- Do not leave this product unattended if bad weather is expected. If assembly instructions are followed correctly, this product will withstand winds and rain. In gusty winds and storms you must collapse the awning / tent.
- During rain always lower one leg to avoid water pooling on awnings.
- Never store a wet and/or soiled awning / tent, as mildew and corrosion is likely to form. This condition is not covered by warranty. Always allow tent and awning to dry completely before packing and stowing.
- During strong winds and storm collapse the awning / tent and seek refuge in your vehicle. Damage caused by storms is not covered by warranty.
- We recommend that you discuss adding this investment to your household Insurance Policy with your Insurance Agent.

IMPORTANT:

This product is to be assembled once before going camping to ensure that all parts are present and to become familiar with the assembly of the awning / tent.

Understand how your tents and awnings keeps waterproof:

We use waterproof and water repellent fabrics. However, with the addition of seams, zips and other desirable features a awning / tent will not be as waterproof as a car, house or other solid structures. The following are common examples of how water can enter a tent:

Condensation:

When warm moist air meets cooler air, clouds (condensation) occurs. A tent fly is an impermeable layer between the warm moist air inside the tent and the cooler air outside the tent. The warm moist air condenses on the inside surface of the fly. Condensation can be reduced if the tent is well ventilated.

Seams:

All tents are manufactured by experts and all seams are treated and/or factory tape sealed. However, seams could leak over time by overstressed webbing lines or wear and tear. If leakage at these points becomes a problem, simply use a recommended seam sealant or bee wax.

Zips:

All care is taken in the design to cover zips with rain flaps. At times wind driven rain could force water through the zips. To minimise this, make sure all doors are closed correctly and that the flaps cover the zips.

Rain Flaps:

All awnings / tents use rain-flaps to provide a second layer of protection to especially vulnerable points like zips and floor seams.

Please make sure all rain flaps are used correctly and cover zips and seams. Make sure all flaps are supporting rain water to flow off the tent. Wrong directed flaps act like a gutter and have the opposite effect.

Structural integrity

A perfectly pitched awning / tent on a flat ground is structurally strong and waterproof. During prolonged wind and rain it may be necessary to tighten guy lines and reset tent pegs to prevent the fly from sagging or flapping and attend to drainage around the perimeter of the awning / tent. Sagging and incorrect pitching weakens the awning / tent structure and could allow water to pool placing undue forces on the tent causing leaking and breakages.

Warranty and contact details

Please check our web page for detailed warranty information:

eMail: _____

T: _____

F: _____

<http://www> _____